

Grafham Gossip

Issue 171 Deadline: Midnight Thursday 13th June

Grafham Flower Festival



June 8th & 9th

Saturday (10:00 - 5:00)

Sunday (10:00 - 4:30)

Free Entry

Refreshments

Thank you to all who are arranging the displays!

We would love to hear from anyone who is able to help for an hour by 'church sitting' to welcome people, or helping serve teas (2 - 4pm both days) or baking a cake

Please contact Hazel by phone 810326
or text 07870 307388

or email hazelpowell19@gmail.com

or contact Jill: 810157 or jillyack@talktalk.net

*Don't forget Songs of Praise
at 4.30 on Sunday*

Read more about the Flower Festival on page 2 in 'View from the Pew.'

Editors' note...

June has arrived, so that means summer should begin soon! June is also the start of the festival, fête and feast



season. We have Grafham Flower Festival on June 8th and 9th, see this page and find details in the 'View' on page 2, and our Beer Festival is coming soon, see page 12.

As usual, you will find some interesting and unusual articles to read in this issue, so be sure to look on every page and don't miss the photographs of previous Flower Festivals on page 2, butterflies from Gregory Belcher on page 7 and birds taken in a Grafham garden on page 15. These all look better in colour so have a look at the colour version of the Grafham Gossip on the website www.grafham.org.uk or join the mailing list to get a link sent to you by email once a month.

Please send in your news, views, photos and gossip in good time for the July deadline, midnight on Thursday 13th of June.

Keep gossiping!

Editors, editor@grafhamgossip.co.uk



Coming Soon
Grafham Beer Festival
Fri 5th, Sat 6th July

Details on page 12 and more updates next month!

Contents

Church Services/View from the Pew.....	2
Parish News/Parish and County Cllrs/A 14 Updates.....	3
Notices/Village Hall Activities/Babysitters.....	4
Talking Shop.....	5
Notices/Shop Hours/Bin Collections.....	6
Butterflies, Gregory Belcher/Useful Phone Numbers.....	7
Adverts/Notices.....	8
Pub Opening Hours/Bike for Sale.....	8
Join in imitating me, Jason.....	9
Adverts/Notices/Guided Walk/Thursford Trip.....	10
2019 Year of the Fly, David C./Dates in June.....	11
Notices/ Beer Festival/Board Game Fun.....	12
Local Festivals in June/ Highwayman Car Scheme.....	13
Adverts.....	14
Grafham Birds.....	15
Local Activities	16



- Quiz night every 4th Thursday 8pm - see notice on page 16
- Board Games Wednesday 19th June - more details on page 12
- Bank Holiday Monday 27th - see Opening Hours on page 8

Grafham All Saints Services

Every Wednesday morning 09.00 - 09.30 Morning Prayer – a short service open to all. Download the Daily Prayer app from the [Church of England website](http://www.churchofengland.org) available for **iOS** and **Android** to join us in spirit from home if you wish, but preferably please come along to the service

26th May (4th Sunday)	19.00 Taizé service with music and candles 
2nd June (1st Sunday)	10.30 Family Service - Lay led
9th June (2nd day of Flower Festival)	16.30 Songs of Praise following end of Flower Festival
20th June (Thursday)	10.00 Mid -week Communion
23rd June (4th Sunday)	10.30 'All Together' with Holy Communion
23rd June	19.00 Taizé service with music and candles 
7th July (1st Sunday)	10.30 Family Service - Lay led



Future mid week Holy Communion services are on **Thursdays at 10.00**; the next one is on 18th July
On Fourth Sundays, an 'All Together' Holy Communion Service rotates between the three churches
 For more information on church services and other events, visit www.eastleightonstone.com and click on **Calendar**

Contacting the Clergy **Revd Jason Taylor** (Rector) Rectory, 15 Church Rd, Brampton PE28 4PF
revjasontaylor@gmail.com 07807 118070

Revd Mike Bigg (Curate) mike@eastleightonstone.com 07380 809377

View from the Pew

At the time of writing it is May and the weather is not sure which season we are in! Hopefully, June will confirm that it's summer!



Our first Sunday service was well attended with 17 in the congregation and some of our regulars away, but lovely to see the return of friends we had missed recently. Once again Rob gave an excellent talk highlighting mistakes we make and sins we commit and how God forgives all if we just ask!

We now look forward to June and our Flower Festival on 9th and 10th. You will have seen the banners around the village. Our flower arrangers will be busy the previous few days and the church will be a hive of activity. The theme "Hobbies" has inspired a huge

variety of displays, so do come along and see what they have achieved. Teas will be served from 2 - 4 pm both days. On Sunday there will be 'Songs of Praise' at 4.30 pm and the bellringers promise to ring for us.

Hazel would be glad of donations of cakes for the teas. Please let her know what you will be able to bring by phone (810326) or text (07870 307388) or email: hazelpowell19@gmail.com. These can be brought to the tea tent from 1pm on either day, or if you are going to be away for the festival, Hazel will gladly put cakes in her freezer beforehand.

A few volunteers to help serve the teas would be appreciated. Please contact Hazel if you can be available for an hour on either day. We are hoping for good weather! It was lovely to see everyone sitting outside last year and enjoying the sunshine!

Looking back at Flower Festivals in Grafham...



2018
The Sixties



2017
Paintings



2016
Nursery Rhymes



If you have foliage in your garden that could be used for this year's displays, please let Jill or Hazel know. Their contact details are on the front page.

PARISH NEWS May 2019

This month's meeting (the Annual General Meeting) was preceded by the Annual Parish Meeting which is held every year specifically for residents to come and talk to the council about issues they would like to be considered.

This meeting, as well as the following AGM, was mostly concerned with the A14 Community Fund and with proposals to explore the possibility of installing an electric vehicle charging point in the village.

The A14 team have a considerable amount of money which they want to grant to 28 parishes most affected by the A14 road works. Grafham is going to put forward three projects which we would like funded and these are:

1. The traffic calming measures recently put to the Local Highways Initiative and rejected.
2. Energy efficiency measures for the village hall, including:
 - a. Double glazing
 - b. Solar panels
 - c. Loft insulation
 - d. LED lighting
3. Ground source heating for the hall.

Another possible bid might be made for the resurfacing of the village hall car park.

Grafham Parish Council *You may contact your parish councillors through the parish clerk or directly.*

Philip Allingham Chairman **01480 811516** philip_allingham@sky.com

Ian Gardener Vice Chair **01480 812821** idg@asc-geomatics.co.uk

Alastair Watson Alwatson.parishcouncil@gmail.com

David Russell DPRussell@live.co.uk

Roy Harold roy.harold5@btinternet.com

Jo Dunn pink.pony.princess@hotmail.co.uk

The Council have been asked to consider installing a basketball net at the far end of the tennis court and they will give this consideration at the next meeting.



The Council have also agreed to revisit the number of verge cuttings in one year. Currently we contract for 12 – however, the optimum number may be different to this now we have the experience of using a different contractor.

A suggestion was put forward to make longer-term plans for the energy efficiency of the village, with a view to making it carbon neutral. If you are interested in following this idea up, please let someone on the Council know.

The Council will be looking to produce a new Parish Plan since it is almost eight years since the last one. If you can help in any way with producing the plan, please let one of the councillors know.

The next meeting of the Parish Council is scheduled for 11th June 2019 in the village hall at 7.30pm. Please come along. We still have a vacant seat on the council and would very much like to hear from anyone considering joining the council.

Margaret Life, Parish Clerk

07780 119311 mlife.parishcouncil@gmail.com

Grafham's County Councillor



Peter Downes

07765 833486

peter.downes@cambridgeshire.gov.uk

Grafham's District Councillor



Darren Tysoe **01480 388310**

darren.tysoe@huntingdonshire.gov.uk

Grove Cottage, Malting Lane, Ellington, PE28 0AA
Follow me on Twitter@darrentysoe and
twitter.com/darrentysoe

Receive my updates on Facebook
www.facebook.com/clrdmtysoe

A14 Cambridge to Huntingdon Improvement Scheme

A14 Integrated
Delivery Team

Details of the planned road closures, diversions and latest news can be found on the Highways England website by clicking [here](#) or type www.highwaysengland.co.uk/A14C2H into your search engine, or stay updated by following: <https://twitter.com/a14c2h> and <https://en-gb.facebook.com/A14C2H>

*There is also a dedicated A14 Public Helpline **0800 270 0114***

Details of the planned road closures and diversions are also available on the Grafham village web site www.grafham.org.uk Ed

Send your news, views, photos and gossip to:
editor@grafhamgossip.co.uk

Next date for Churchyard Makeover

The churchyard is looking so much better after our recent efforts that we can now leave it until we see what grows in the coming months. The next tidying session is planned for Saturday July 27th.

Do come along to help out, enjoy the chat and the delicious refreshments. To find out more,

email Jean Baty: jeanbaty@btinternet.com

Deadline

Please send us all your adverts, notices, news, views and gossip ASAP and definitely by midnight on

Thursday 13th June for the July issue

Thanks, Ed editor@grafhamgossip.co.uk

Hunts Community Cancer Network (HCCN) hold a weekly support group

Ellington Holistic Drop In

at Ellington Village Hall

Every Tuesday 10am until 2 pm



To find out more contact Annie by phone 01234 709836 or email annie@hccnthecharity.org

Good quality paperback books in clean condition

We love to receive your paperback books to stock our church bookstall. Please leave them in the church porch.

Yes ✓

- Paperback books in good condition ✓



The book stall is a fantastic fund-raiser for our village church, but we've found that we can sell only good quality, clean paperbacks and find it difficult to lift, carry and dispose of other items.

Thank you for your continued support!

No X

- Hardbacks x
- Manuals x
- Magazines x
- Encyclopaedias x
- Other items x

Grafham Village Hall	Activities & Classes 2018	
Mondays	Line Dancing	7.30pm
Tuesdays	Pilates	9.45am
	Art Club	1.30pm
Wednesdays	Little Fishes (pre-school children)	10.00am
	Yoga	6.15-7.15pm
	Karate	7.30pm
Thursdays	Kick Boxing	7.00pm
Saturdays	Chinese Martial Arts	10.30am

For enquiries about classes and about booking the hall, please telephone 07711 769911

Read more about village hall activities on page 16

Your advert could be here!

To advertise, email: editor@grafhamgossip.co.uk

Parish of East Leightonstone

To join the mailing list and receive the regular newsletter visit

<http://www.eastleightonstone.com> and click News



Babysitters

Bryony 22 yrs **812354** experienced with newborn to 14yrs

Mya 15 yrs **819326** **Nicci** 17 yrs **811279**



Huntingdonshire Music School

Saturdays at Hinchingsbrooke School

Music Lessons & Ensembles

Music for everyone all ages, all abilities

We also teach music lessons at local schools

✉ enquiries@huntsmusicsschool.org.uk

☎ 01480 58 48 67

🏠 HuntsMusicSchool.org.uk



Playtimes Pre-school

Ferriman Road, Spaldwick PE28 0TQ

Tel: 01480 890077 www.playtimesplaygroup.co.uk

We offer: Breakfast club 8am - 9am

Preschool 9am- 3pm

Out of school club 3.30pm - 6pm

Talking Shop

Where did that month go? We're loving the warmer weather and welcome the extra visitors in the shop. Let's hope the forecasters are right and we're in for another long, hot summer.

We were blessed with wonderful weather for our sponsored walk around Grafham Water earlier in May. Beautiful blue skies, a gentle breeze and sparkling views made it very enjoyable. We'd like to thank everyone who sponsored us and helped raise £437 for our good causes. Grafham Water Lions organise the walk every year and this is our third year of taking part. 10% of the money raised goes to them, with the remainder split equally between our chosen charity, which is currently Magpas, and the shop. We like to recognise our volunteers' contribution to the shop by organising a barbecue in the summer and a get together at Christmas. Money raised by the walk enables us to say 'thank you'. If you'd like to be part of our team, come in for a chat. No experience necessary and you will be made very welcome. It's a great way of getting to meet new people.

Fancy a picnic? We've always got a good selection of sausage rolls, scotch eggs, samosas, filled baguettes and much more. You'll find cold meats, cheese, crisps, cake, fruit and cold drinks. In fact, we've got everything you need so come in and see us soon. And don't forget the ice creams. All the usual favourites are in our chest freezer, including three different flavours of Magnum.

We've recently had a new delivery of local honey which always proves popular so get yours while you can.

Our selection of Saints and Sinners jam, marmalade, jelly, chutney and mustard offers something a little different. It is homemade in Lincolnshire and we are the only supplier in this area. Where else have you seen Raspberry Jam with White Chocolate? We have a good selection on the shelves at the moment but we don't expect it to be around for long.

Our vegetarian options continue to grow with the recent addition of Linda McCartney Mozzarella Burgers and Sausages priced at £1.99.

As you probably know, we have an extensive range of DVDS for sale. What you might not know is that we have also recently acquired some music CDs. Along with the very large bucket of popcorn at £3.99, that sounds like a good night in!

If you're looking for something to keep the children amused, alongside our stationery we have colouring books, chalks, coloured pencils and bubbles. **Look out for summer toys coming soon.**

NEW FROM GRAFHAM BREWING COMPANY

Following on from the indisputable popularity of Hodders Panama, we are now selling the latest offering from Grafham Brewing Company. Shooters Hollow is a light summery American pale ale with distinctive citrus fruit flavours and is proving to be just as popular so get yours and see what you think. Check out the locally inspired gold labelling.



Cash or Card?

As more and more people are now making contactless payments, we are waiving the £5.00 minimum spend requirement. However, each card transaction incurs a fee so we would be grateful if you could use cash where possible for small purchases.

Enjoy the sunshine and see you in the shop soon.

Lynn and Paul

Opening Times

Mon-Fri 8.00 - 6.30

Sat 8.00 - 5.00

Sun 9.00 - 2.00

Bank Holidays 9.00 - 2.00

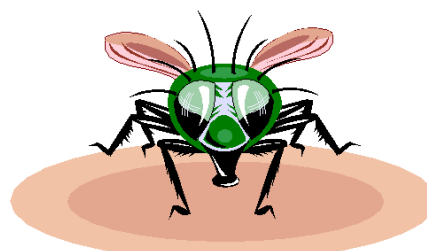
01480 810119 shop@grafhamvillageshop.co.uk
www.grafhamvillageshop.co.uk



If you'd like to write a 'one-off' article or a regular feature for the *Grafham Gossip*, send it by email to editor@grafhamgossip.co.uk



It's the Year of the Fly!



See page 11

Grafham Community Shop

Opening Times **Tel: 01480 810119**



Mon-Fri 8.00 - 6.30

Sat 8.00 - 5.00

Sun 9.00 - 2.00

Bank Holidays 9.00 - 2.00

Email: shop@grafhamvillageshop.co.uk
www.grafhamvillageshop.co.uk

See page 5 for shop news in 'Talking Shop'



Grafham Beer Festival
6th and 7th July 2018
 Friday 6pm - 11pm
 Saturday midday-11pm
 Over 15 Local Real Ales and Ciders
 Fresh Food and Live Music
 Both Evenings



Grafham Community Shop **Wanted Shop Manager(s)**

Grafham Community Shop has a vacancy for one or more people to replace one of our existing shop managers who is moving on to pastures new.

This paid role is to work with our other existing manager to help organise and run the shop.

The role would suit somebody living locally, who would like part time employment. We would be willing to discuss the exact hours to make the job work for the applicant and the shop.

The main qualification for the job is enthusiasm to make our shop a continuing success!

Full training is available.

For more details and to discuss the role please contact:

Martin Joyner 07802 257404
martin@martinjoyner.com

by 10th June

Has the bin man bin Mam?"



Wednesdays Blue bin (recycling) and Black bin (refuse) - alternate weeks

Every other Thursday - Green bin (garden waste)

If you require any further advice or information about waste and recycling services, call 01480 388640 between 8.45am and 5.00pm Monday to Thursday and 8.45am and 4.30pm on Fridays or visit www.huntingdonshire.gov.uk/bins



June						
Mon	Tues	Wed	Thurs	Fri	Sat	Sun
					1	2
3	4	Blu	G	7	8	9
10	11	Blk	13	14	15	16
17	18	Blu	G	21	22	23
24	25	Blk	27	28	29	30

July						
Mon	Tues	Wed	Thurs	Fri	Sat	Sun
1	2	Blu	G	5	6	7
8	9	Blk	11	12	13	14
15	16	Blu	G	19	20	21
22	23	Blk	25	26	27	28
29	30	Blu				

Power cut?

- Text POWER and your postcode to 80876
- ukpowernetworks.co.uk/liveupdates
- Call us free anytime on 105 or 0800 31 63 105



Buckden Gardeners Association

Buckden Gardeners Association meets on the third Tuesday of the month from October to April in Buckden Village Hall. Topics focus on gardening but also include related subjects such as wild flowers, bees and birds. In the summer months we organise outings to gardens and related areas.

All are welcome. For more information please visit our website www.buckdengardeners.info or just come along.

Rosemary Surridge, Secretary

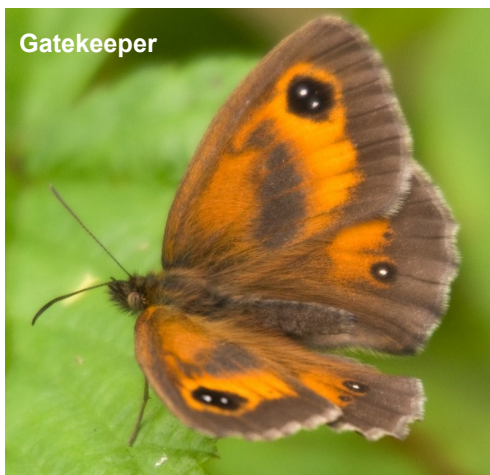


Butterflies

Butterflies, together with their close relations the moths, make up the order Lepidoptera, so called because the beautiful wings get their colouring from hundreds of tiny overlapping scales. The literal Greek translation for Lepidoptera is 'tile-winged.' There are approximately 165,000 described species in the world with probably the same number again awaiting discovery. The UK has just under 2,600 species, but the number varies as species disappear or are re-discovered, whilst new species colonise from Europe. There are currently considered to be 72 species of British butterflies but some of these are rare migrants that may gain a better foothold if our climate changes.



Marbled White



Gatekeeper

The distinction between butterflies and moths is not a particularly scientific one, with both groups sharing many similar characteristics. In the UK the antennae is usually the indicator with all butterflies having a club on the end, however this is also true of the day-flying family of moths called Burnets. These are distinguished from butterflies by the way they fold their wings along their bodies, something no butterfly does.

The life cycle of a butterfly goes through four distinct phases, the egg, caterpillar, pupa or chrysalis and the adult. All stages produce either flamboyantly colourful or wonderfully camouflaged individuals with even the eggs, no bigger than a pinhead, covered in colourful blotches, spines and ridges. The caterpillar is the most obvious of these stages, after the adult, and this is where the individual does all its growing, consuming large amounts of food and shedding its skin several times during the growing process. It is also at this point that predation is the greatest problem. Some butterflies have overcome this by an ingenious method. The caterpillar resembles and produces secretions similar to an ant larva. This fools any ants coming across the caterpillar into taking it back to their nest. The caterpillar then proceeds to feed on the real grubs of its host for anything up to two years before pupating and the leaving the nest as an adult butterfly. Other butterflies can cram two, three and even four life cycles into a year, thereby ensuring survival through sheer weight of numbers.

Whilst you don't see butterflies in the winter they are still about. Different species overwinter at different stages of the life cycle but overwintering as a caterpillar seems to be the preferred option. A few species, however, migrate to and from the Mediterranean and even North Africa. The Painted Lady is famous for this and, in summer, we can be inundated by this lovely insect when conditions are favourable. Few realise though that the one of the commonest garden butterflies also leaves us. Red Admirals are incapable of surviving any but our mildest of winters and head south at the end of autumn, only for a new generation bred in the warmer southern climate to rejoin us in spring.



Painted Lady

Gregory Belcher

Senior Reserves Officer
Wildlife Trust BCN

Photographs by Gregory Belcher



Bedfordshire
Cambridgeshire
Northamptonshire

Useful Phone Numbers

All emergencies **999**

Non-emergencies **101**

Cambridge Constabulary HQ
01480 456111

Minicom for hard of hearing
01480 422493

Action Fraud **0300 123 2040**

Crimestoppers **0800 555111**
(anonymous)

To report anti-social behaviour in
Grafham **01480 388379** or **387097** or
e-mail:

Barbara.gowling@huntsdc.gov.uk or
tracey.guinea@huntsdc.gov.uk

To stop unwanted phone calls
08450 700707

To stop unwanted mail
08457 034599

Power cut Call **105** or
0800 31 63 105 or
text **POWER** and
your postcode to **80876**



**For Sale
Carrera Subway
Ltd Edition Hybrid Bike**

Complete with Shimano 21 gears, alloy V-brakes and mudguards. Even has handlebars and saddle!

This is a great little bike suitable for both road and off-road use, but has been barely used in the three years that I have had it - basically, the owner is lazy.

It's in very good condition having spent its life in the garage!

Aluminium frame size is 18 inch (46 cm) suitable for smallish folk.

Low priced at £150 for a quick sale – no offers thanks.
Contact Gianni on 07902407720 I am based in Grafham



**Grafham
Trout**

Opening Times

Mon to Wed - Closed

Thurs - 18:00 - 22:00

Fri - 18:00 - 23:00

Sat - 13:00 - 23:00

Sun - 13:00 - 19:00

Open longer for special occasions

Dogs welcome

**Bank Holiday Monday 27th May
13.00 - 17.00**

HUNTINGDONSHIRE FAUNA & FLORA SOCIETY

Sunday 16th June 2.30pm Jubilee Wood

Leaders: Peter Lake and Andrew Frost

Jubilee Wood is just over a hectare of new woodland (planted in 2002) established on what was once waste ground. The wood is owned by the Parish Council of Great Gidding which, with the guidance of the Forestry Commission, planted a mix of indigenous trees such as oak and ash to celebrate the Queen's Golden Jubilee in 2002. Park on Main Street (B660) near the pub in Great Gidding. Grid reference is TL121836.

For more information about the Society visit www.hffs.org.uk

A recent publication 'The Orchid Flora of Huntingdonshire and Soke of Peterborough,' is available to buy for £20 plus £3 P&P. Please make cheques out to, 'Huntingdonshire Fauna & Flora Society' and send to: P Walker



6 Andrew Rd, Eynesbury, St. Neots, Cambs. PE19 2QE

The Labour Party in Huntingdon

Our next monthly meeting is

Monday 17th June

7.30pm at The Medway Centre

More details on Facebook

<https://www.facebook.com/HuntingdonLabourParty/>

or via the website:

<http://www.huntingdonlabourparty.org.uk>

Come along and get involved in helping your neighbours and the community!

**A FREE TREATMENT
AND FREE LAWN
HEALTH CHECK**



**Now celebrating our
20th year in business**

- An Independent Lawn Care Company
- Free Programme Proposal
- Creating healthy, vibrant lawns
- We rate 5/5 on all our reviews



'for that lawn you've longed for'



01480 812393



@prolawncareuk



facebook.com/prolawncareuk

email: info@prolawncare.co.uk web: www.prolawncare.co.uk

Help!



We are very short of volunteer tea/coffee makers for our Little Fishes Stay + Play Tots Group, which meets on Wednesday mornings in the village hall. If you can spare an hour, now and then, we would be most grateful for your help!



*Please contact
Hazel 810326*

or email:

editor@grafhamgossip.co.uk

Join in imitating me

Christian faith is not immune from the cult of celebrity; John Piper, Rick Warren, Smith Wigglesworth, Tommy Tenney and Philip Yancey are just a few that came to mind - you can no doubt think of others. It is tempting when you find someone who says the sort of thing you find helpful and inspiring to put them on something of a pedestal. I can remember, when I was a student at LBC getting withering looks from half of the room when after someone had said *'John Stott said such and such about this.'* I said, *'That doesn't necessarily mean he was right though, does it.'*

In his letter to the Philippians, Paul says, *'If you must imitate anyone imitate me.'* (A bold proposition to make). He goes on: *'Keep your eyes on those who live as we do.'* Copy me and if you are tempted to copy any -one else first check that they are living the same way as we do.

You see, it's easy to SAY the right thing and if you are a charismatic enough person, to convince yourself and others that you've got everything worked out; it is much harder though, to constantly DO the right thing. You'll recall the words of Jesus here: *Each tree is recognized by its own fruit. People do not pick figs from thorn bushes, or grapes from briars* (Luke 6).

Paul tells his readers that many of those who were Christian celebrities of their own day have now fallen from grace; and not just that, *'They glory in their shame.'*

But our Citizenship is in heaven

We are not like them, Paul says. *'They live according to the world but we are citizens of heaven; earth is not our real home.'* Because my Mum was Irish I have recently obtained Irish citizenship and an Irish passport - I'll let you guess why! With citizenship comes rights and obligations; as citizens of heaven we are called to live to a different standard than the rest of the world.

Heavenly citizenship means we have to consider our words and actions, how we spend our time and money, how we treat others and what is really important. But living that way is hard when the culture around you is constantly pushing the other way. Paul encourages his readers by saying: *'We eagerly await a Saviour from there [heaven], the Lord Jesus Christ, who, by the power that enables him to bring everything under his control, will transform our lowly bodies so that they will be*

like his glorious body.'

As Paul himself has said elsewhere, there is a great reward for those who finish the race set before them. We are not doing this for earthly rewards or praise, God knows we'll never get that if we truly live out our faith. We're doing it for the eternal reward promised us in the death and resurrection of Jesus.



Stand firm

We are guaranteed to come into conflict with the powers and principalities of the world when we live like Jesus

told us to. Sometimes it's going to seem we face impossible decisions or odds. What do we do when that happens? (4:1) We stand firm in Jesus. We believe what he said is true and we don't budge. Note that we don't need to go on the offensive, Paul doesn't say *'Attack'*, he says *'Stand firm!'*

We all have our struggles, and they may be similar but in some ways they are all uniquely ours. Nobody else can know how we feel and nobody can give us any instant solutions. To paraphrase Jesus, *'Trouble is a given for Christians!'* Whatever you are going through, whether it is you personally or somebody you love, remember Paul's words: *'Imitate me and stand firm.'* I love what Paul wrote to the Corinthians in his second letter, it has sustained me through much:

For this light momentary affliction is preparing for us an eternal weight of glory beyond all comparison, as we look not to the things that are seen but to the things that are unseen. For the things that are seen are transient, but the things that are unseen are eternal. (2 Cor 4)

This will pass and then you'll see it will all have been worth it!

I'd like to finish with some words by Wendell Berry:

'It may be that when we no longer know what to do, we have come to our real work and when we no longer know which way to go, we have begun our real journey.

The mind that is not baffled is not employed. The impeded stream is the one that sings.'

Jason

To read more from Jason and Mike visit:

www.eastleightonstone.com/ and click on [Blog](#)

(Contact details for Jason can be found on page 2. Ed)

To advertise, email: editor@grafhamgossip.co.uk

Community notices are free. Business adverts are priced according to size, payable in advance. They start at £4.00 for a small box.

The money pays for the printing of the newsletter and any profit is donated to All Saints, Grafham and its Restoration Fund.

Grafham Grass Cutting

Tired of mowing your lawn and want someone else to take care of it? Just call or text me for reasonable prices and a reliable service.



Simon 07887 628528

If you can spare an hour once every few months to help dust and vacuum the church to keep it looking clean and welcoming, please contact:



editor@grafhamgossip.co.uk

Waresley Wood

Saturday 8th June 10.30am
A Guided Walk



Bedfordshire
Cambridgeshire
Northamptonshire
Huntingdonshire
Local Group

Waresley Wood is an ancient woodland, predominantly consisting of ash and oak. It is a site of special scientific interest due to its diverse flora and is also home to many breeding birds. Over 500 species of moth and butterfly have been recorded here. We will also look at the progress of Browne's Piece which is an area of land that has been reclaimed from farmland to try to redress the loss of woodland here in the early 20th century.

The walk will be led by one of the reserve wardens and will start at 10.30am. Everyone is most welcome to attend. Please meet at the reserve entrance. OS TL256550 or SG193RH. There is no charge, but donations are welcome. For more information please contact Alistair:

alistairgrant@hotmail.com

Part of the Wildlife Trust for Bedfordshire, Cambridgeshire and Northamptonshire
Registered Charity No: 1000412

Brampton Village Fête

Saturday 22nd June

12.00 till 4.00pm

Monday 25th November Thursford Christmas Spectacular

Departing from Huntingdon Bus Station
10.50am

Coach leaves Thursford after the show ends, usually about 5.00pm

Price per person is £60.00 which includes the return coach travel and ticket entry to this spectacular show.

We will be joining a trip already organised by Dews Coaches. There are 20 places available so please contact me, ASAP but no later than 10th August.

This is a direct coach from Huntingdon straight to the venue, so you will have to make your own arrangements for food. I would advise that Thursford does have the Garden Pavilion restaurant serving home cooked food (such as jackets, casseroles and curries.) They also have three snack cafés serving food and drinks and a fully licensed bar.

For further information or to book please contact me on 07711 012957 or email:

tina.theodorou@tiscali.co.uk

Picture perfect framing...



Heron
Picture Framers
QUALITY CUSTOM FRAMING

For further information contact:
Email: nigel.whitlock@gmail.com
Telephone: 01480 812042
Mobile: 07962 064503



Friendly family business, providing all your framing requirements, from prints, artwork, photography to embroidery and cross stitching, **great for the home and ideal gifts.**

Can provide ready made frames only to order.

Grafham Oil Syndicate

The syndicate continues to grow, keeping more money in the village.



It's FREE to join and we must keep a bulk order attractive enough to receive a discount, so simply email Simon:

grafhamoil@gmail.com
or call 07887 628528

2019 Year of the Fly

2019 is formally designated as international "Year of the Fly." It is a celebration of flies and their role in nature and human society. The intention is to educate the general public about the diversity, significance and beauty of flies and how they affect our lives. It's an opportunity for fly specialists to showcase their research work and new discoveries and make these more widely known. Through this site, social media, public lectures and temporary museum displays, the fascinating world of flies will be revealed to a wider audience and encourage interest in the group. <http://yearofthefly.org/>

There are more flies in the UK (over 7000 species) than there are mammals across the globe. Some of these are incredibly rare – Fonseca's seed fly as championed by Buglife is one of our rarest endemic invertebrates in the UK, and is just limited to a short stretch of coastline in northern Scotland. This species needs protection as much as any of its much larger cousins. www.buglife.org.uk

Dipterists Forum seeks to increase the knowledge of all UK species by running courses, talks and promoting the recording schemes to help us monitor populations. In today's climate, where land use and climate change threaten our biodiversity, flies make up such an important part of that, existing in all sorts of ecological niches, pollination, decomposition, predation, vectors to feeding us and our livestock. No other group of animals are so ecologically diverse. www.dipterists.org.uk/year-of-the-fly

There are several species present in UK. The species in the photo appears each year in my own garden and is the most common species found in southern England. Its very long proboscis and bossy buzzing quickly have our attention. Despite its beelike furriness it is a fly, it does not sting but it will persist in buzzing around if you are in its territory.

This Bee Fly (The Dark-Edged, *Bombylius major*) is a parasite of solitary bees. <https://www.buglife.org.uk/bugs-and-habitats/dark-edged-bee-fly>

Here is an extract from the site. *Their larvae are parasitoids of the larvae of mining bees which usually nest in colonies in soil such as woodlands or even your flower beds and lawns. Female bee-flies hover a few inches above mining bee nesting areas and flick eggs onto the ground with a rapid twist of the body. They actually collect fine dust in a little chamber at their rear end just prior to this, as the eggs need to be dust-coated before they are laid. Once a bee-fly egg hatches the larva crawls into the underground nest cell of a host bee. Once the host grub is sufficiently large, the bee-fly larva attaches itself and starts to suck out the body fluids of the host species!*

So why do I care about flies (and insects generally?) Remember the old adage 'Look after the pennies and the pounds will take care of themselves.' I learned that as a child and what it meant to me was, if you take care of the small things (including small coins) then the bigger things become very much easier to accumulate or manage. Today it means something new and even more important to me (and us,) the health of our environment, its biodiversity is totally dependent upon the small creatures that pollinate, feed larger animals (and plants) and are the equivalent of the pennies in the *pennies and pounds* argument.



David Cudby

Some dates of interest in June 2019

On the first day of June, meteorological summer begins - important for weather forecasters.

The Summer Solstice is the day with the most hours of daylight and falls on June 21st this year. This longest day is also known as Midsummer and the celebrations of this day go back thousands of years. The solstice still brings many visitors to Stonehenge who stay overnight to see the sunrise over the ancient stones. It's the first day of Astronomical Summer.

The Queen's 92nd official birthday will be celebrated on the 9th June, the second Saturday in the month. It is

marked every year by a military parade - Trooping the Colour - by the Queen's personal troops, The Household Division. It takes place on Horseguards Parade.

The Isle of Wight Festival 13th to 16th June is the UK's longest running music festival which began in 1968 and attracts about 90,000 visitors over the weekend.

Father's day to honour fathers and father figures is also on 16th June, the third Sunday of the month.

Another British tradition is the famous race meeting, Royal Ascot -18th to 22nd of June this year - it oozes elegance, high fashion and magnificent millinery as well as the finest racehorses competing for millions in prize money.



Grafham Beer Festival



Friday 6th July Events

Open 6pm till 11.30pm

Free Entry

Bar open all Evening

BBQ 7pm - 10pm

8pm - 11.30pm - Live Band - **Vintage Stuff**

Saturday 6th July Events

Open 12pm Midday till 11.30pm

Free Entry

All day - Free Inflatable Assault Course

Bar open all Day

Gin Bar and **PIMM'S** Station all Afternoon

BBQ 1pm - 8pm

Cream Teas 2pm onwards by Friends of Spaldwick School (FOSS)

Children's Entertainer - Mr Marvel from 3.30pm to 5pm

6.00pm - 11.30pm - Live Music - TBC

Final details next month

Join Our Short Walks

Ideal for people of any age, who would like to get a little fitter

Walks are free, leisurely, lasting around 30 minutes

Starting from The Surgery, Buckden

Every Thursday at 10.00am

Come and make new friends, build up energy and fitness

Walks are led by Hunts District Council trained walk leaders



Rail Roads/Stock Trading



Farming/Development



Civilization Building



Diseases/Cooperative



Board Game Fun
Wednesday, 19th of June
At the Grafham Trout
7-10pm



Classics

I've got about 30 different games but I'm always interested in playing new ones!

Robert



War Games/Strategy

A selection of local events during June



Guided Mill Tours
 Houghton Mill
 Mondays + Thursdays in June
 11:30am - 12:30pm 0344 249 1895

Acoustic guitar, an afternoon of music, song and conversation Huntingdon Library
Thursday 6th June 1.30 - 3pm Local musician, Martin Gilman, will be playing and singing some of his favourite songs and chatting about music and guitars. Free (donations welcome) booking required. Please speak to library staff or call 0345 045 5225 for a ticket.



Bubble Rush Sunday 9th June
 Huntingdon Racecourse
 For details contact Huntingdon First at info@bidhuntingdon.co.uk or call 01480 450250

St Neots Folk Festival
 6th - 9th June
 For tickets call 01234 376278 or visit <http://stneotsfolkclub.co.uk/>



Great Paxton FEAST week concert
 Sun 16th June 5:00 - 6:20pm



Summer Music from the wonderful choir - Cambridge Voices - under the Direction of it's founder, Ian de Massini. An early evening concert of Summer music which will include a specially written piece.
 07522 449535



Blues in the Pews, St James' Church Little Paxton
Sat 22nd June 7:00 to 9:30pm
 Featuring Richard Ashman on percussion and vocals, sultry songstress Stella Hensley, keyboard wizard Colin Hazel and guitar heaven with Chris Newsman, renowned blues, slide and ragtime guitarist. 01480 877215

Read A Little Aloud, Huntingdon Library
Tuesday 11th June

2nd Tuesday of month Huntingdon Library 10.30am – 11.30am Come along and listen to literature, stories and poetry for adults being read aloud. Everyone welcome. Free (donation welcome) Refreshments available afterwards.

Hinchingbrooke School Art Exhibition
Thursday 13th June 4 – 7.30pm

Open View Invitation to celebrate GCSE, AS and A Level art work. Open to the public, all welcome, free entry. Art Department, Hinchingbrooke School, Brampton Rd, Huntingdon PE29 3BN
 Email: mld@hinchbk.cambs.sch.uk
 01480 375 700 ext.5768

Huntingdon Food, Drink and Craft Market

Fri 14th - Sat 15th June
 10am – 5pm Market Square
 Brought to you by Huntingdon Town Council and Huntingdon First. Come and enjoy a mouth-watering choice of food and drink as well as family-fun entertainment!

For information about the Food, Drink and Craft Market, contact Huntingdon First on 01480 450250 or email info@bidhuntingdon.co.uk



The Highwayman Car Scheme

Do you know what it is?

It's a scheme to help provide transport for people who are not able to make essential journeys by public transport or any other means.

A team of volunteer drivers take you to appointments e.g. the Doctors, Hospital, Dentist alongside social activities such as visiting relatives or friends and even shopping.

The scheme is aimed at helping people to get out and about.

Passengers pay the driver on the day of travel to contribute towards fuel expenses.

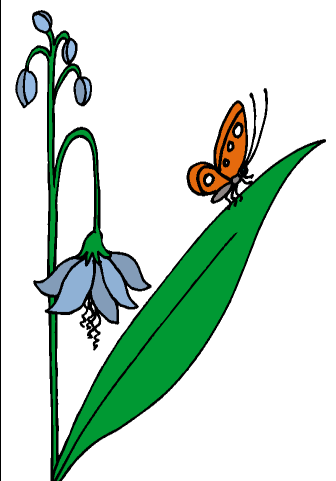
This is at a rate of 30p per mile with a minimum charge of £3.00

To arrange a journey or for more information please call 07786 520540

If the phone is not manned at the time of your call leave a message on the answerphone and the coordinator of the drivers will get back to you.

We are also always looking out for volunteer drivers so if you want to help your community give us a call. We would love to hear from you.

The scheme is supported and advised by Cambridgeshire County Council and Care Network Cambridgeshire





Grafham Plumbing and Heating Ltd



- Oftec registered technician
- High efficiency condensing boilers fitted
- Oil tanks fitted complete with bases
- All boilers serviced
- All plumbing undertaken
- Vaporising appliances fitted and serviced

Service and maintenance plans available
Professional, friendly and reliable

clinthomas_morgan@icloud.com



01480 812590
07799 640476



PET & WILD BIRD FOOD

GRAFHAM WATER
(NEXT TO THE VISITOR CENTRE)

WIDE RANGE AT LOW PRICES

OPEN WEDNESDAY- SUNDAY 09.00-17.30

TEL:01480 819730

FREE PARKING & FREE DELIVERY

www.petfoodsdirect2u.co.uk

GAP Home Improvements

**Free back door,
when ordered with
5 or more windows**

For a free, no obligation quotation
please contact your local representative
Jon Goodchild on 07825 238240 or email

jon@gaphomeimprovements.co.uk

WINDOWS DOORS ROOFLINE
CONSERVATORIES

GARDEN ROOMS FLAT ROOFS

www.gaphomeimprovements.co.uk

Kevin Hutchinson

- Reliable Local Carpenter and Joiner
- All carpentry work undertaken
- Fitted kitchens, new doors, wood flooring and much more
- No job too small



Tel: 01480 811863/07889 414274

JEZ ASHCROFT LTD

All your decorating needs including:

**Coving, Internal Decorating
Drylining & Plastering**

FREE ESTIMATES

Please Call

Tel: 01480 812461 Mobile: 07708031493

BSM Driving Instructor **BSM**

DSA Approved, Pass Plus Registered
Living locally in Grafham

Call John Sisseman for details



Tel. 07806 941675

Paul's Private Hire and Chauffeur Service

Van Diemens Way, Grafham,
Huntingdon, Cambs. PE28 0GB

Tel. 01480 811594 Mobile 07795 296281

Email paul.blanchard439@btinternet.com

Travel in style via Mercedes cars
to your destinations

Cinnamon Bar and Indian Restaurant

Open 7 days a week 5pm to 10.30pm

Also lunch time if pre-booked
for 5 or more people



Call 01480 812211/811316

Thursday Night is 'Banquet Night'

1 starter, 1 main, 1 side.

Any rice or any nan **£13.50**

King prawn or duck £1.50 extra

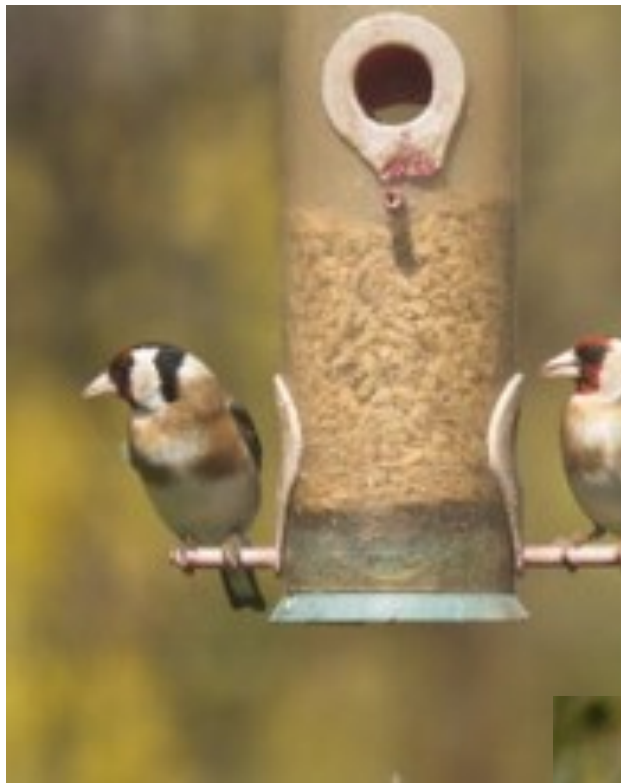
<http://cinnamonhuntingdon.co.uk/>

A few Grafham birds

*A willow warbler in the garden
looking down on us*



*Male and a female goldfinches
- keeping an eye on us*



*Middle Right: Female blackcap
in a tamarisk tree*

Jackdaw and wood pigeon in garden



Photographs taken by Grafham Resident

Coffee Morning

Grafham Social Committee invites you to Coffee Mornings at 10.30am on the third Wednesday of the month:

19th June - Diana Thomas, Wesley House

This is an informal social occasion for residents of the village. Please come along for a cup of coffee and a chat.



.Come and join the

GRAFHAM LINE DANCERS

Beginners are welcome

Monday evenings in the Village Hall

7.30 – 9.00pm

For more information ring
Julia 01480 811613 or
Text Penny 07986 509481



Grafham
Trout



Quiz night

Last Thursday of every month

Starting at 8pm

Teams of 4, £1 entry per person

Grafham and Ellington Art Group

<http://grafhamandellingtonart.weebly.com/>

Grafham Village Hall, Every Tuesday 1.30-4pm

Calling all who want to meet and paint with like minded people on a regular basis.

Beginners and those with more skills are all very welcome.

Cost: About £2 to cover hall hire/refreshments.
Come along with your paints and equipment!



Please ring me for more details.
Jackie Woods 01480 890279

Grafham Church Flower Club

We are available to decorate the church for weddings and other church occasions.

Floral arrangements for: pedestal, altar, font, windowsills, pew ends, pillars.

Please contact Hazel Powell on
01480 810326 for details and quotes.



If anyone in the village has foliage in their garden that they would be willing to donate for church decoration for festivals, please let us know, we would be very grateful.

The Mobile Library

Route H24 visits Breach Road, Grafham on the 4th Wednesday of every month from 10.40 to 11.00. Next visits - 26th June

For renewals/ enquiries call 0345 045 5225 or click [here](#)



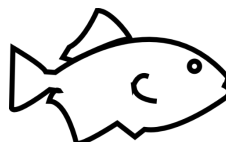
GRAFHAM VILLAGE HALL

has a Public Entertainments Licence for music, dancing, performing arts and can accommodate 92 guests seated in rows or 150 at a dance/disco - an ideal venue for children's and family parties. There is a playing field for sports activities and the hall has small changing rooms with shower facilities.



For details or to book, tel: 07711 769911

Grafham Little Fishes



Toddler and Baby
stay and play session
All Welcome

Wednesdays 10.00 to 11.20 term time only
Grafham Village Hall

Free play time followed by a short bible story, action songs and simple craft.

Just turn up on the day

Little Fishes is very short of helpers to make tea/ coffee. Please contact Hazel 810326 or email: editor@grafhamgossip.co.uk if you can help.
See also the notice on page 8

theWI
INSPIRING WOMEN

Ellington
and Grafham WI

meets on the first Tuesday of the month in Ellington village hall. Membership is £41 per annum but you are most welcome to come as a visitor. The programme is varied and interesting with speakers or events every month.

June Members' Evening - It's a surprise!

If you would like more information please contact:
Sue 01480 896139 normanrice@btinternet.com or
Ann 01480 891192 nigel.bentley@btinternet.com

Across the Churches Bible Study

We are a small group meeting twice a month (Tuesdays 7.30pm) for Bible study, prayer and fellowship.

We come from different churches and are always happy to welcome new members.

For more information, please contact Rob or Jean Clark 01480 890033.



Grafham Wildlife and Conservation Group

Regional winners of the BTCV Green Award 2006 & 2007 invite you to carry out woodland conservation

Call Sam Malt: 01480 811654 / 07849 082870
or email: sammalt@btinternet.com
www.gwgc.btck.co.uk/

